

NMIT-0016 80C535 CPU+LCD+KEYPAD

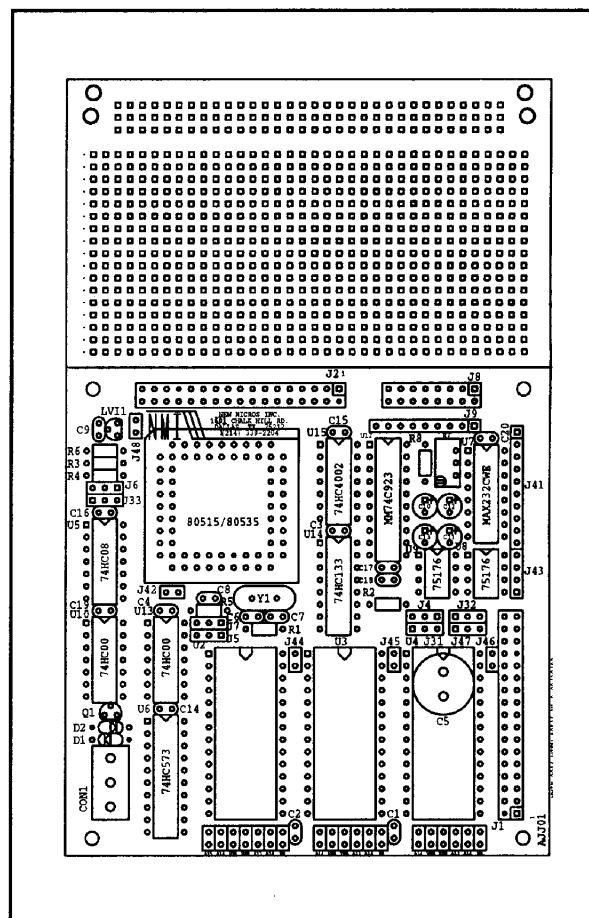
The NMIT-0016 is the 80C535-based CPU board for the NMI "100 Squared"™ board series.

FEATURES

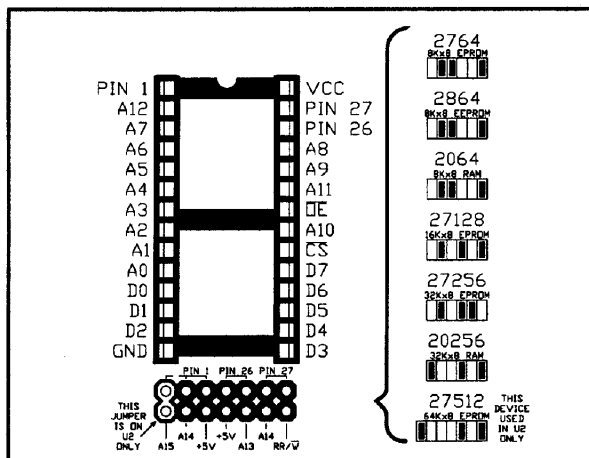
- 80C535 CPU (8051 architecture)
- 4 parallel ports
- Full Duplex Serial Ch. RS-232 (optional 422/485)
- Three 16-bit timer/counters
16-Bit Reload, Compare, Capture capability
- 8-channel, 8-bit A/D
- Programmable reference voltages
- 16-Bit Watchdog Timer
- Boolean Processor
- 256 directly addressable bits
- 12 Interrupt sources
7 ext., 5 int., 4-levels of priority
- 8K RAM
- 128K address space (optional Harvard arch.)
- Intelligent LCD interface (@ \$FFE0 Hex)
- 4x5 Keypad interface (Uses P4.0-P4.4 & INT3)
- Three 28-pin JEDEC memory sockets
- Flexible address decoding, socket assignments
- Battery backup circuits for memory
- Programming languages provided on disk

The NMIT-0016 is a complete system, ready to develop, or run, dedicated applications. Simply apply regulated 5V power, attach a host RS-232 port, and begin programming. Then, the user program can be added to its externally battery backed RAM, or by a user-supplied ROM/EPROM/EEPROM.

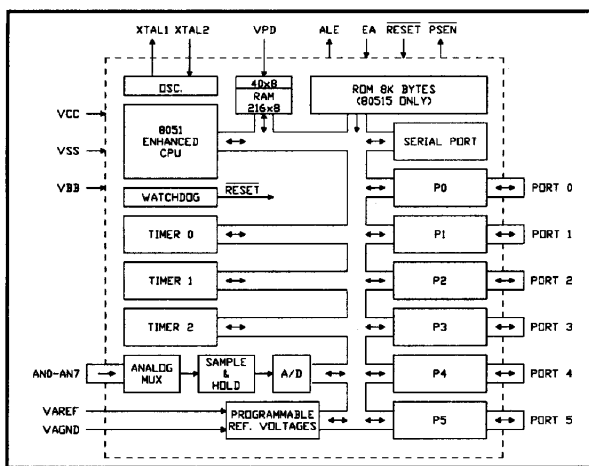
All circuit paths of the more expensive NMIX-0016 are provided on the PCB, (see upper figure on right) but are not populated (see lower figure on right). The user may add parts as desired.



NMIT-0016 80C535 CPU CARD "100 Squared"



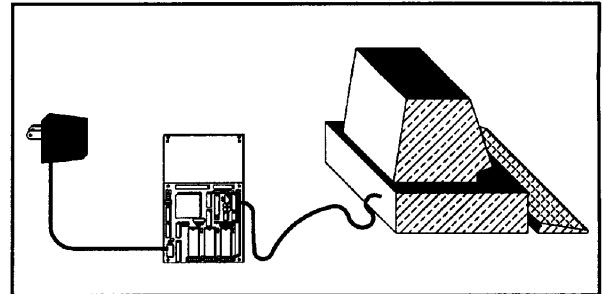
28-Pin JEDEC Memory Sockets



80C535 CPU Block Diagram

The "100 Squared"™ were named for their size, with 100x100mm of active component area, on a 100x160mm Eurocard format. The system is compatible with most of the New Micros NMIX, NMIT and NMIS series peripherals. The VSC-34 connectors have the same pin-outs on all of these boards. The 28-pin JEDEC memory sockets allow flexible memory configurations.

Smart terminals, or personal computers with communications packages, can download source code to the NMIT-0016 via RS-232 ports. Interactive code development on the target system gives fast and efficient debugging. The supplied languages give machine level access.



Development Configuration

The NMIX-0016's makes a very cost effective solution as target systems with LCD and Keypad interfaces, particularly when small size and ease of development are required. Few single board computer offers as many features in such a small space. High Level Languages include: Small C, FORTH, BASIC and Assembly Language. Other languages and cross compilers are also available from third parties.

WORLD HEADQUARTERS

WORLDWIDE REPRESENTATIVES

AMERICA (N, C & S)	CENTRAL EUROPE	SOUTHERN EUROPE	SCANDINAVIA	ASIA	RUSSIA
NEW MICROS, INC. Sales Department 1601 Chalk Hill Road Dallas, TX 75212, USA Phone: (214) 339-2204 Fax: (214) 339-1585 G3, G2, FMG1 User Bulletin Board: (214) 339-2321 24/12, N, 8, 1	MS Microscan Vertriebs GmbH Ueberseering 23 2000 Hamburg 60 GERMANY Phone: 0 40 / 6 32 32 14 Fax: 0 40 / 6 32 37 10	DEMEL G. Demel Handelsges. m.b.H. Hoffmeistergasse 8-10/1/4, A-1120 Vienna, AUSTRIA Phone: (0043) 0222 813 2507-0 Fax: (0043) 0222 85 95 93 Telex: 75311851	FIELD OY ELECTRONIKKARYHMA P O Box 131 SF 00601 Helsinki, FINLAND Phone: 358 0 757 1011 Fax: 358 079 8853 Telex: 12-2022 FIELD SF	CIBI TRADING INT'L 20 Matintiman Street Teacher's Village, Diliman Quezon City, PHILIPPINES Phone: (632) 922-2988 Fax: (632) 921-8027	TECHNOFORTH 59, Bolshoi Pr., P.S., Leningrad, 197101, USSR Phone: (812) 233-86-21 (812) 233-34-10 Fax: (812) 233-86-21



NEW MICROS, INC.
 1601 Chalk Hill Road
 Dallas, Texas 75212
 Tel: (214)-339-2204