

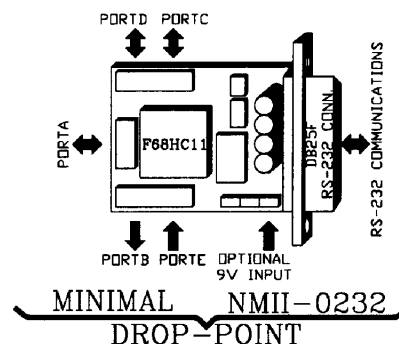
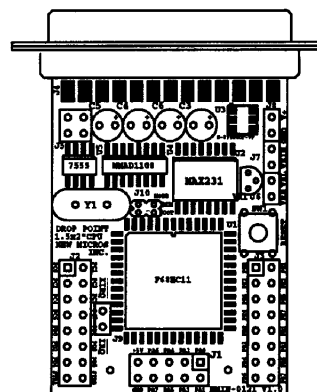
# DROP-POINT F68HC11 CPU CARD

The Drop-Point, NMIN-0121, is a F68HC11-based CPU board in the 1.5x2"s™ board series. It combines the features of the 2x2" MINIMAL, with an F68HC11FN installed in single chip mode, and the 2x2" NMII-0232, with power supply features and RS-232 conversion.

## FEATURES

- F68HC11™ CPU
- Max-FORTH V3.5™ built-in programming language with Floating Point extensions
- 311 predefined words in the language
- 5 parallel ports
- 1 Asynchronous Serial Channel
- 1 Synchronous Serial Channel
- 8-channel, 8-bit A/D
- 8-bit counter
- 16-bit timer
- 3 or 4 input captures
- 5 or 4 output compares
- 1/2K EEPROM
- 1/2K RAM
- RS-232 conversion of serial-in/serial-out
- DB25F Standard RS-232 connector
- Can accept external 9VDC @ ~10mA, or draw operating power from two driven RS-232 lines

The Drop-Point is a complete system, ready to use for evaluation of the F68HC11 with Max-FORTH V3.5, or to run small, dedicated applications. Only connection to serial communications is necessary to begin evaluation/development. In most cases operating power can be drawn from two active lines of the host's RS-232 (TxD and DTR, for instance). An off-board 9VDC power source can also operate the board. Only the addition of the user program, in its internal EEPROM, is needed for dedicated application service. It's extended RAM allows large system look and feel, with 80 character input buffer, etc., ideal for remote control and data logging.



Application

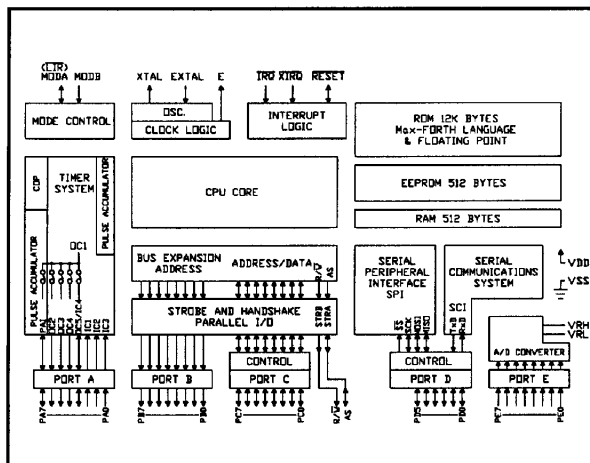
**DROP-POINT**
**F68HC11 CPU CARD**
**1.5x2"s**

The Drop-Point is a cost effective evaluation board for the F68HC11 V3.5. It can interactively develop code, or accept downloaded program code, from a RS-232 based terminal, or, personal computer running communication software. No additional circuitry is needed to "talk" to the systems with RS-232. A level shifter is provided to convert the TTL serial in and serial out to RS-232 levels.

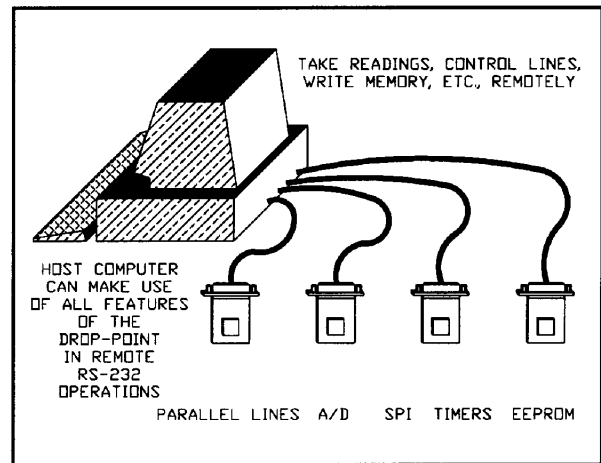
The Drop-Point, as a small target system, is without equal, particularly when small size, RS-232 capability and on-board power supply features are required. While the resources of the Drop-Point are limited, the Terminal Input Buffer has an 80 character capability (V3.5 E9 version). The internal RAM can hold several typical FORTH definitions. Applications of up to 512 bytes can be developed using the internal EEPROM for storage.

(Applications which require external memory should use the NMIS-0021).

The Drop-Point excels in specific dedicated application - it can be used as an RS-232 peripheral. A remote host computer can interactively access all the features of the F68HC11. The Drop-Point can execute the host's commands sent as ASCII encoded Max-FORTH™ instructions. The A/D can be read, the ports changed, and the SPI operated. Even the EEPROM can be read and written remotely. Mixing interactive commands and small programs can make even more complete utility of the F68HC11 features. Predefined functions can be moved into EEPROM and invoked at the discretion of the host system at will. The flexibility, and resulting usefulness, of the Drop-Point in such service, can not be overstated.



F68HC11 V3.5 CPU Block Diagram



Remote RS-232 Operation

## WORLD HEADQUARTERS

## WORLDWIDE REPRESENTATIVES

AMERICA (N, C & S)	CENTRAL EUROPE	SOUTHERN EUROPE	SCANDINAVIA	ASIA	RUSSIA
<b>NEW MICROS, INC.</b> Sales Department 1601 Chalk Hill Road Dallas, TX 75212, USA Phone: (214) 339-2204 Fax: (214) 339-1585 G3, G2, FMG1 User Bulletin Board: (214) 339-2321 24/12, N, 8, 1	<b>MS</b> Microscan Vertriebs GmbH Ueberscering 23 2000 Hamburg 60 GERMANY Phone: 0 40 / 6 32 32 14 Fax: 0 40 / 6 32 37 10	<b>DEMEL</b> G. Demel Handelsges. m.b.H. Hoffmeistergasse 8-10/1/4, A-1120 Vienna, AUSTRIA Phone: (0043) 0222 813 2507-0 Fax: (0043) 0222 85 95 93 Telex: 75311851	<b>FIELD OY</b> <b>ELEKTRONIKKARYHMA</b> P O Box 131 SF 00601 Helsinki, FINLAND Phone: 358 0 757 1011 Fax: 358 079 8853 Telex: 12-2022 FIELD SF	<b>CIBI TRADING INT'L</b> 20 Matimutan Street Teacher's Village, Diliman Quezon City, PHILIPPINES Phone: (632) 922-2988 Fax: (632) 921-8027	<b>TECHNOFORTH</b> 59, Bolshoi Pr., P.S., Leningrad, 197101, USSR Phone: (812) 233-86-21 (812) 233-34-10 Fax: (812) 233-86-21



**NEW MICROS, INC.**  
**1601 Chalk Hill Road**  
**Dallas, Texas 75212**  
**Tel: (214)-339-2204**